	LIBR-100 Library Exploration <a href="http://libguides.stcc.edu/libr100">http://libguides.stcc.edu/libr100</a>
Professor Warren	Spring 2009

## Map Exercise

1. Follow the instructions on the map
2. The level of detail is up to you. (hint: more is better, but I don't expect Rand McNally)
3. Notice the different shelving areas in the library. Think about what purpose they serve.

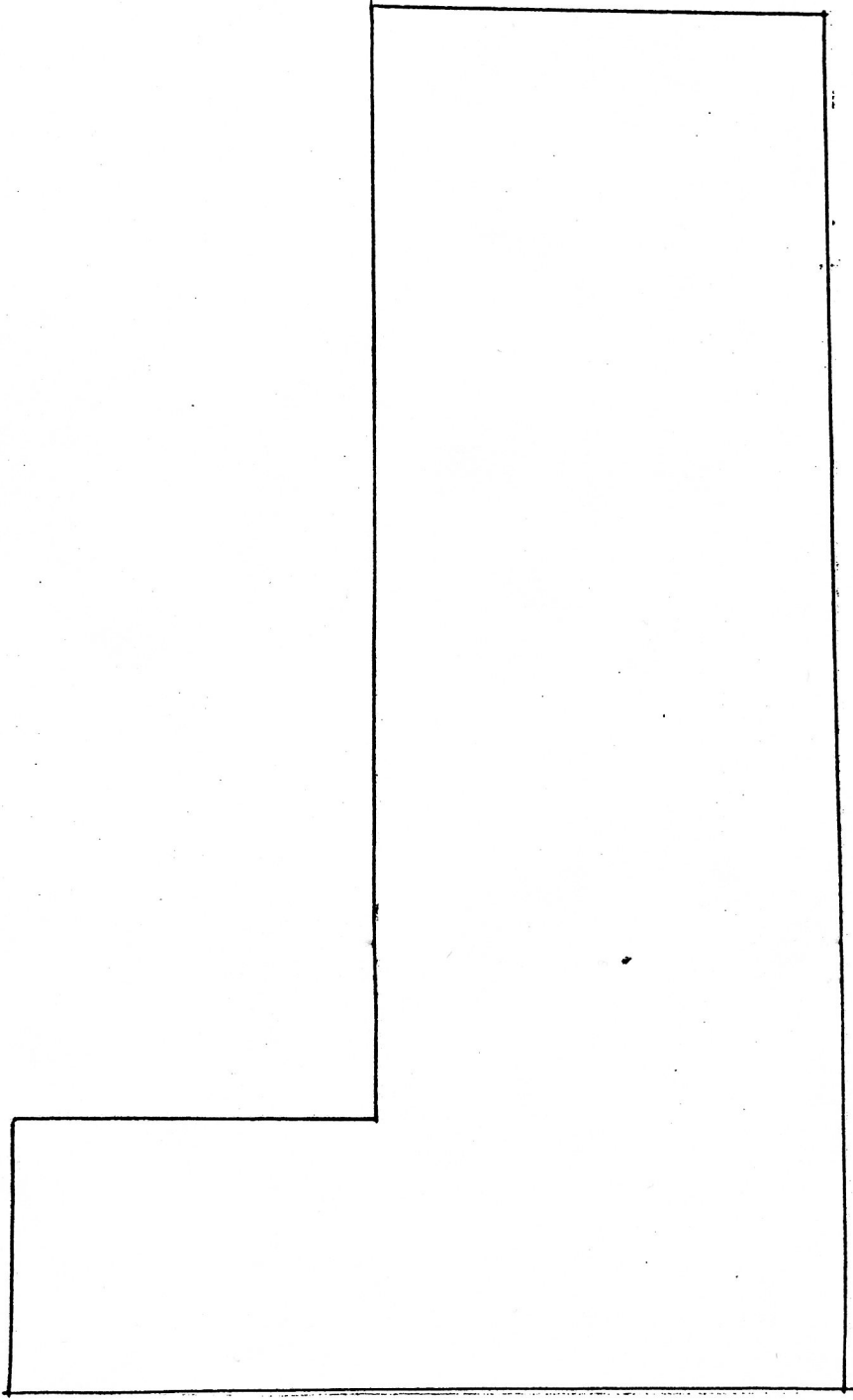
Think about other things as well. Are there areas for groups of students to study without disturbing other students? How do the layout and physical limitations of the library affect the organization of materials?

4. Try to find one thing that's surprising or unusual, something you haven't seen before or didn't expect to see in a library.
5. For safety's sake, please note emergency exits, fire extinguishers, lists of safety procedures, etc. These don't necessarily have to appear on your map. Just sayin'.

MAP EXERCISE

Please locate and label on these two floor maps ALL library : (1) Service areas and desks and (2) Shelving areas. Please include AV rooms, elevators, stairs, bathrooms, study rooms, and the Marrion room.

FIRST FLOOR



SECOND FLOOR

